

Spherical levelling washers

Steel / Stainless Steel

SPECIFICATION

Version in Steel

Steel, 1.7225 (42 CrMo 4 V) **ST**
zinc plated, blue passivated

Version in Stainless Steel

Stainless Steel AISI 303 **NI**

INFORMATION

Spherical levelling washers GN 350.3 have been designed to match the levelling sets GN 350 (see page 1014), GN 350.1 (see page 1016), GN 350.2 (see page 1018), GN 350.5 (see page 1020).

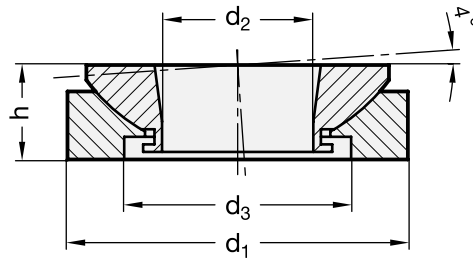
The two spherical washers are used together „undetachably“.

The load bearing capacity of these spherical washers is relatively high. This is not only due to the material quality but also to the matched sphere of the concave „pan“.

Furthermore it is recommended using high-strength washers for bridging d_2 .

TECHNICAL INFORMATION

- Stainless Steel characteristics (see page A26)



GN 350.3

Description	d1	d2	d3	h	For threaded bolt up to max.	Static load in kN	⚖
GN 350.3-25-ST	25	8.5	15	8	M 8	40	22
GN 350.3-32-ST	32	13	20	10	M 10	65	44
GN 350.3-45-ST	45	20	30	12.5	M 16	120	90
GN 350.3-58-ST	58	29	38	16	M 24	210	215
GN 350.3-70-ST	70	36	48	20	M 30	330	362
GN 350.3-80-ST	80	44	61	20	M 36	495	425
GN 350.3-105-ST	105	58	78	25	M 48	920	930

GN 350.3-NI

STAINLESS STEEL

Description	d1	d2	d3	h	For threaded bolt up to max.	Static load in kN	⚖
GN 350.3-25-NI	25	8.5	15	8	M 8	27.1	20
GN 350.3-32-NI	32	13	20	10	M 10	43.4	45
GN 350.3-45-NI	45	20	30	12.5	M 16	84	105
GN 350.3-58-NI	58	29	38	16	M 24	148	215
GN 350.3-70-NI	70	36	48	20	M 30	225	372
GN 350.3-80-NI	80	44	61	20	M 36	323	427
GN 350.3-105-NI	105	58	78	25	M 48	546	940